

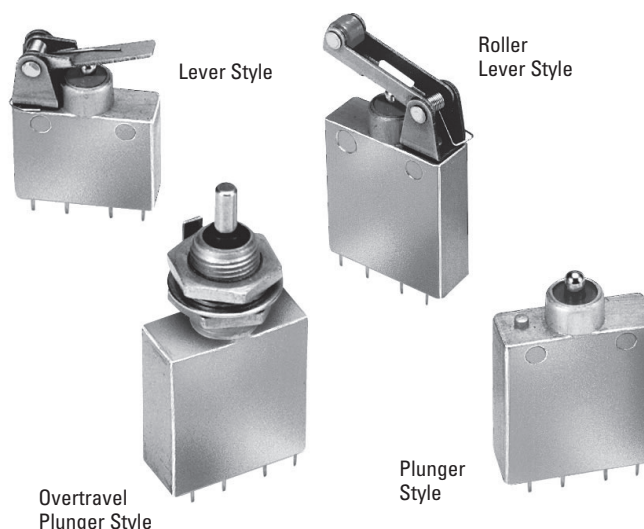
FEATURING OTTO B5 SERIES BASIC SWITCHES

These subminiature sealed switches are contained in a rugged aluminum housing with choice of lever, roller or plunger. Featuring the B5 series basic switch, the P6-3 series is able to switch up to 10 amps. The high contact pressure and superior wiping action of the OTTO design also makes the P6-3 series an excellent choice when switching logic level loads.

Sealing against water and other liquids is per MIL-PRF-8805. Wire leaded models feature potted leads. The solder terminals are epoxy sealed.

Features:

- Compact design
- Watertight to MIL-PRF-8805
- Choice of four actuator styles
- Choice of wire lead or solder termination styles
- Up to 10 amps switching capability
- High contact pressure for low levels
- Precision operating points



Standard Characteristics/Ratings:

ELECTRICAL RATINGS:

Sea Level @ 28VDC

50,000 feet @ 28VDC

Load	Single Circuit N.O. or N.C.	2 Circuit Per Pole	Single Circuit N.O. or N.C.	2 Circuit Per Pole
Resistive	10A	10A	10A	10A
Inductive	7.5A	5A	3.5A	2A
Motor	4A	2A	N/A	N/A
DWV	1000Vrms		500Vrms	

Electrical Life: 50,000 cycles

Mechanical Life: 50,000 cycles

OPERATIONAL:	P6-31	P6-32	P6-33	P6-34	P6-35	P6-36	P6-37	P6-38
Operating Force:	16 oz max	40 oz max	20 oz max	40 oz max	32 oz max	40 - 60 oz max	20 oz max	48 oz max
Release Force:	4 oz min	8 oz min	4 oz min	8 oz min	4 oz min	24 oz min	4 oz min	8 oz min
Movement Differential:	0.060" max	0.020" ± 0.010" max	0.060" max	0.020" ± 0.010" max	0.080" max	0.010" - 0.035" max	0.080" max	0.040" max
Pretravel:	0.125" max	0.050" max	0.125" max	0.070" max	0.125" max	0.050" max	0.125" max	0.070" max
Overtravel:	0.025" min	0.012" min	0.025" min	0.187" min	0.025" min	0.012" min	0.025" min	0.187" min
Strength of Actuator:	10.0 lbs.	25.0 lbs.	10.0 lbs.	25.0 lbs.	10.0 lbs.	25.0 lbs.	10.0 lbs.	25.0 lbs.

Temperature Range: -55°C to +85°C

Seal: Enclosure Design 3, watertight per MIL-PRF-8805

MATERIALS:

Plunger: Corrosion resistant steel

Lever: Corrosion resistant steel (where applicable)

Mounting Hardware: None provided

SUBMINIATURE WATERTIGHT SEALED

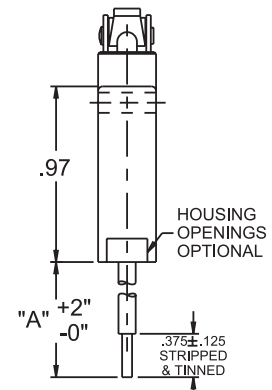
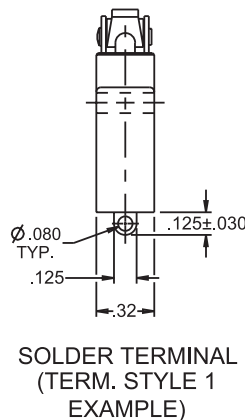
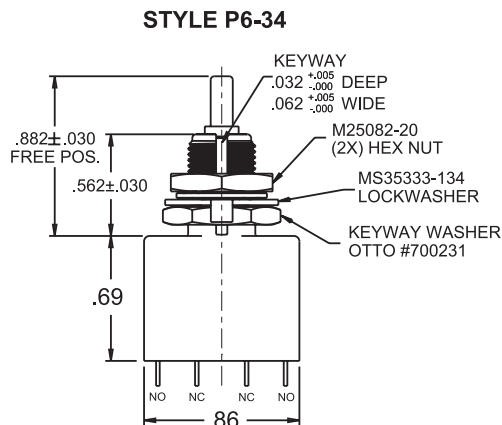
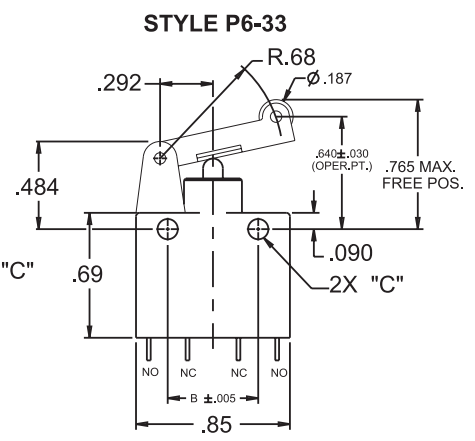
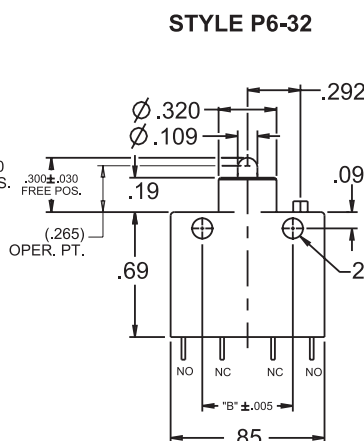
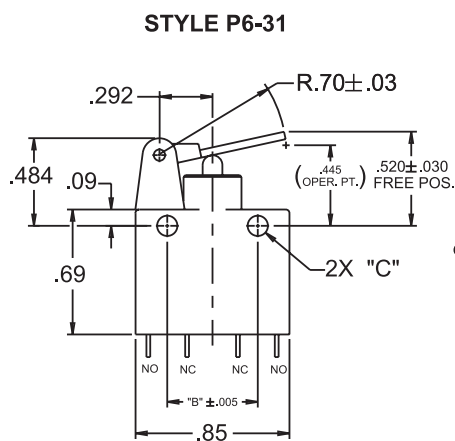
P6-3
LIMIT
SWITCHES

FEATURING OTTO B5 SERIES BASIC SWITCHES

P6-3 PART NUMBER CODE

Single Pole

Actuator Style	Terminal Style	Circuitry	Mounting Holes (See drawing below.)	Serial Digit
1. Lever	1. Solder Terminals	1. SPNO-DB, Form X	1. No Holes	0. 0 Except for Specials
2. Plunger	3. 1' Potted Leads	2. SPNC-DB, Form Y	2. 1/2" Centers for #4-40 Screws	
3. Roller Lever	4. 3' Potted Leads	3. SPDT-SB, Form C	4. 3/8" Centers for #2-56 Screws	
4. Overtravel Plunger	5. 6' Potted Leads	4. SPDT-DB, Form Z		



CIRCUIT SCHEMATIC

<p>SPNO - DB (FORM X)</p>	<p>SPNC - DB (FORM Y)</p>
<p>SPDT - SB (FORM C)</p>	<p>SPDT - DB (FORM Z)</p>

POTTED WIRE LEADS		MOUNTING HOLES:	
STYLE	DIM "A"	CODE 2 FOR 4-40 SCREWS	CODE 4 FOR 2-56 SCREWS
3	12"	.500	.375
4	36"	.500	.375
5	72"	.500	.375