

# LOW LEVEL SEALED PUSHBUTTON SWITCHES

**P9C**  
DOME  
PUSHBUTTONS

LOW LEVEL, MOMENTARY ACTION, LONG LIFE, RUGGED PUSHBUTTON FOR HARSH ENVIRONMENTS

Competitively priced, the P9C pushbutton is a low-level only momentary, normally open, IP68S sealed switch with a dome style pushbutton and a 3 million cycle life. Flush dome and raised dome button profiles are available in either gloss or matte finish.

The P9C comes with a standard 15/32" threaded case for hex nut mounting and features short behind panel depth. With less than 25mΩ contact resistance, it offers excellent performance while operating under severe conditions found in demanding applications.

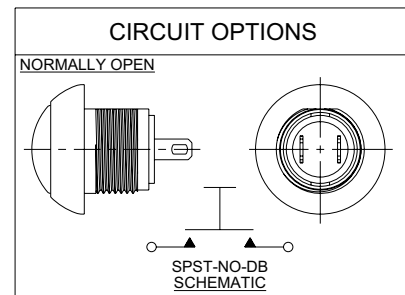
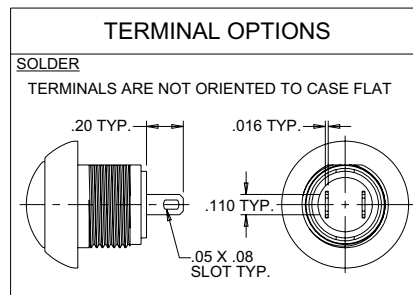
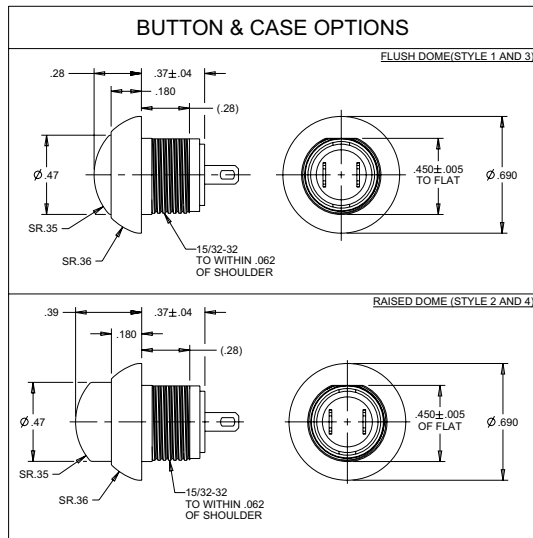
The P9C is a quality precision switch designed for use in control panels, grips, computers, instruments and other applications where attractive, rugged, long life pushbutton switches are required.

## Features:

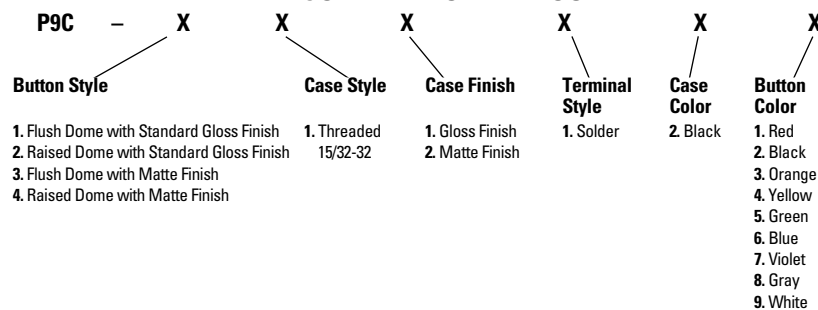
- **3 million cycles**
- **Sealed to IP68S**
- **All plastic housing & button construction**
- **Positive tactile feedback**
- **2 button heights**
- **RoHS/WEEE/Reach compliant**



Standard Characteristics/Ratings:	
<b>ELECTRICAL RATINGS:</b>	
<b>Load</b>	1-32VDC
Resistive	100mA
Inductive	100mA
DWV	1000Vrms
<b>Electrical Life:</b>	3,000,000 cycles
<b>Mechanical Life:</b>	3,000,000 cycles
<b>Seal:</b>	Dusttight and Watertight per IP68S
<b>Operating Temp Range:</b>	-40°C to +85°C
<b>Operating Force:</b>	1.2 lbs. ± 0.7 lb.
<b>Total Travel:</b>	0.080 inches max
<b>Overtravel:</b>	0.010 inches min
<b>MATERIALS:</b>	
<b>Case:</b>	Thermoplastic
<b>Button:</b>	Thermoplastic
<b>Mounting Hardware:</b>	Hex nut, lockwasher



## P9C PART NUMBER CODE



PUSHBUTTONS