

FEATURING B2 & B3 BASIC SWITCHES

### 3-Position, 6 Pole, Lever Lock

**SPECIFICATIONS:**

| Position | Circuit    | Force                | Action     |
|----------|------------|----------------------|------------|
| 1        | 3PNO, 3PNC | Switch OFF           | Maintained |
| 2        | 6PNO       | 2.0 lbs. to 6.0 lbs. | Momentary  |
| 3        | 6PNC       | 2.0 lbs. to 6.0 lbs. | Locked     |

**Basic Switches:** Per MIL-PRF-8805/4 (except with integral lever)

**Operating Force:** 1.5 lbs. to 2.5 lbs.

**Rating:** 0.1mA to 1 amp Resistive @ 28VDC  
0.5 amp Inductive @ 28VDC

**Handle:** Stainless steel, dull nickel plate

**Cap, Handle:** Brass, dull nickel plate

**Bushing:** Stainless steel with black oxide finish

**Bracket:** Stainless steel



**T1-0125**

### 3-Position, 3 Pole

**SPECIFICATIONS:**

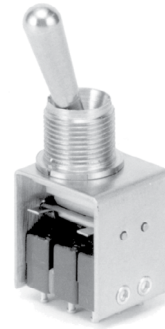
| Position | Actuation        |
|----------|------------------|
| Up       | N.C., N.C., N.C. |
| Center   | N.C., N.O., N.C. |
| Down     | N.O., N.C., N.O. |

**Basic Switches:** Per MIL-PRF-8805/4

**Operating Force:** 1.0 lb. to 5.0 lbs.

**Rating:** 0.5 amp Inductive @ 28VDC  
300mA @ 5VDC Resistive  
Higher ratings available

**Mechanical Life:** 25,000 cycles



**T1-0041**

### 3-Position, 6 Pole

**SPECIFICATIONS:**

| Position | Circuit    | Force                | Action     |
|----------|------------|----------------------|------------|
| 1        | 3PNC, 3PNO | 2.0 lbs. to 6.0 lbs. | Maintained |
| 2        | 6PNC       | N/A                  | N/A        |
| 3        | 3PNO, 3PNC | 2.0 lbs. to 6.0 lbs. | Maintained |

**Rating:** 1 amp Resistive @ 28VDC  
0.5 amp Inductive @ 28VDC

**Mechanical Life:** 25,000 cycles

**Bushing, Bracket & Lever:** Stainless steel



**T1-0050-1**

### Mounting Hardware

| MILITARY P/N                      | OTTO P/N   | BUSHING SIZE (inches) |
|-----------------------------------|------------|-----------------------|
| <b>KEYWAY WASHERS</b>             |            |                       |
| MS25081-C0                        | 710081-C0  | 0.250"                |
| MS25081-C4                        | 710081-C4  | 0.469"                |
| MS25081-C6                        | 710081-C6  | 0.625"                |
| <b>INTERNAL TOOTH LOCKWASHERS</b> |            |                       |
| MS35333-135                       | 710333-135 | 0.250"                |
| MS35333-136                       | 710333-136 | 0.469"                |
| MS35333-138                       | 710333-138 | 0.625"                |
| <b>HEX NUTS—STANDARD</b>          |            |                       |
| MS25082-C14                       | 710082-C14 | 0.250-40              |
| MS25082-C21                       | 710082-C21 | 0.469-32              |
| MS25082-B11                       | 710082-B11 | 0.625-24              |
| <b>HEX NUTS—WIRE LOCKING</b>      |            |                       |
| MS21340-04                        | 710340-04  | 0.469-32              |
| MS21340-05                        | 710340-05  | 0.625-24              |

All hardware is stainless steel except MS25082-B11 which is brass, black oxide plated.