

## ALTERNATE ACTION RING ILLUMINATED, METAL CASE & BUTTON



High Profile  
Curved Button



The LP5-V series is an alternate action switch that has been designed to provide attractive, lighted position indication for applications in harsh environments, where security and reliability are paramount. The series features both aluminum and stainless steel cases watertight to IP68S. UL1500 ignition protected. Momentary action is available in the LP3-V series.

This high reliability switch offers the durability and ruggedness our customers have come to expect with the added benefit of illumination. Ideal for marine, off-highway and industrial control applications that require an illuminated switch.

This switch offers positive tactile feedback, less than 25mΩ contact resistance, and a variety of LED colors available in both flat and domed actuator bezel shapes.

### Features:

- **Security (aluminum) or vandal resistant (stainless steel) case & button**
- **Ring illuminated**
- **Watertight to IP68S**
- **Less than 25mΩ contact resistance**
- **Variety of button options and LED colors**
- **Drop in replacement to the P5-V series**
- **UL recognized & CSA certified**
- **RoHS/WEEE/Reach compliant**

### Standard Characteristics/Ratings:

#### ELECTRICAL RATINGS:

Load	Sea Level @ 28VDC or 115VAC, 60/400Hz
Resistive	5A
Inductive	3A
Lamp	1A
Motor	3A
DWV	1000Vrms through switch contacts only
Logic Level	10-100mA @ 3-28V, max DC

**Electrical Life:** 25,000 cycles

#### LIGHTING:

Light Source Voltage (DC)	Actual Voltage Nominal (DC)	Voltage Max (DC)
2	2	2.6
6	7	8
12	13.5	14.5
24	28	28.6

**Mechanical Life:** 200,000 cycles

**Seal:** IP64 or IP68S

**Operating Temp Range:** -55°C to +85°C

**Operating Force:** 3.0 lbs. +1.0/-0.5 lb.

**Total Travel:** 0.180 inches max

**Overtravel:** 0.012 inches min

#### MATERIALS:

**Case:** Stainless steel or anodized aluminum alloy

**Button:** Thermoplastic

**Center Cap:** Stainless steel or aluminum

**Terminals:** Standard and low level options available

**Mounting Hardware:** Hex or knurl nut, lockwasher and panel seal gasket

### LP5-V PART NUMBER CODE

Type	Case Style	Circuit Rating	Light Source Type* w/ Rev. Pol Protection	Seal Level	Case/Center Cap Color	Button Profile
A. Aluminum V. Stainless	1. 5/8-24 & Hex Nut 2. 5/8-24 & Knurl Nut 3. 5/8-24 W/D-Flat & Hex Nut 4. 5/8-24 W/D-Flat & Knurl Nut 5. 3/4-20 & Hex Nut 6. 3/4-20 & Knurl Nut 7. 3/4-20 W/D-Flat & Hex Nut 8. 3/4-20 W/D-Flat & Knurl Nut	0. Indicator Light 1. SPST/Std. 2. SPDT/Std. 3. SPST/Logic Level 4. SPDT/Logic Level	A. 2V Red LED B. 2V Green LED C. 2V Amber LED D. 6V Red LED E. 6V Green LED F. 6V Amber LED G. 12V Red LED H. 12V Green LED J. 12V Amber LED K. 24V Red LED L. 24V Green LED M. 24V Amber LED N. 2V Blue LED P. 6V Blue LED Q. 12V Blue LED R. 24V Blue LED S. 2V Deep Green T. 6V Deep Green U. 12V Deep Green V. 24V Deep Green	2. Dusttight 3. Watertight	1. Silver 2. Black**	1. High Profile Flat Button 2. High Profile Curved Button 3. Low Profile Flat Button 4. Low Profile Curved Button 5. Flush Profile Flat Button

\*2V LED's are intended for use with an external resistor.  
See appendix for complete voltage/ratings table.

For additional LED lighting options, contact factory.

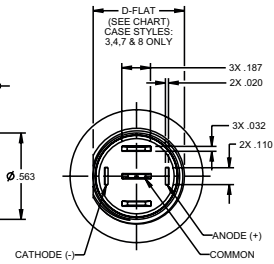
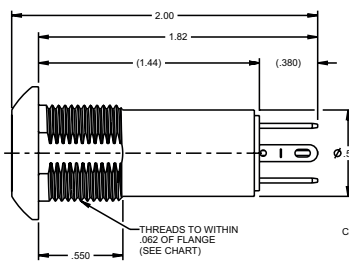
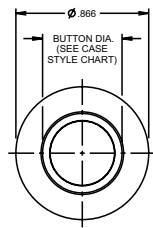
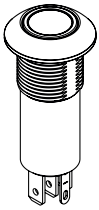
\*\* Only available on LP5-A styles.

# ILLUMINATED VANDAL RESISTANT PUSHBUTTONS

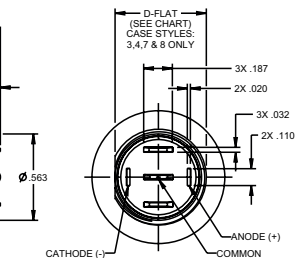
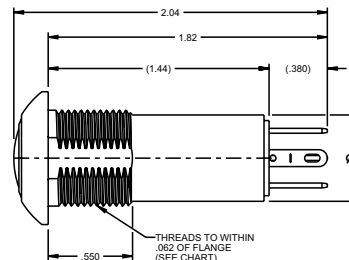
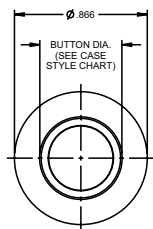
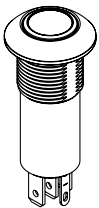
**LP5-V**  
ILLUMINATED  
VANDAL RESISTANT  
PUSHBUTTONS

## ALTERNATE ACTION RING ILLUMINATED, STAINLESS STEEL CASE & BUTTON

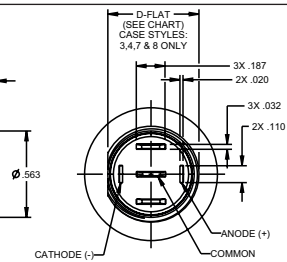
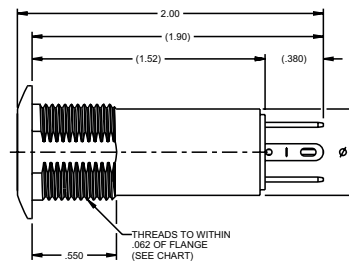
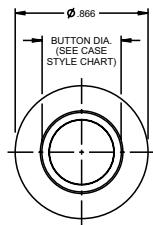
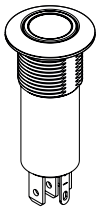
High Profile Flat Button  
Button Profile Style 1



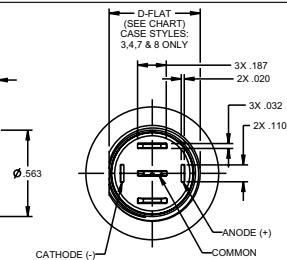
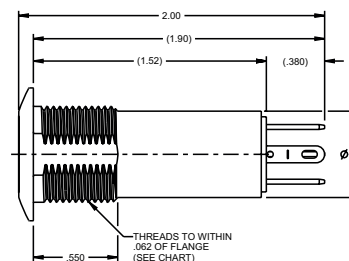
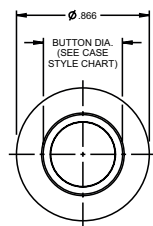
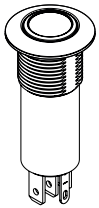
High Profile Curved Button  
Button Profile Style 2



Low Profile Flat Button  
Button Profile Style 3



Low Profile Curved Button  
Button Profile Style 4



Flush Profile Flat Button  
Button Profile Style 5

